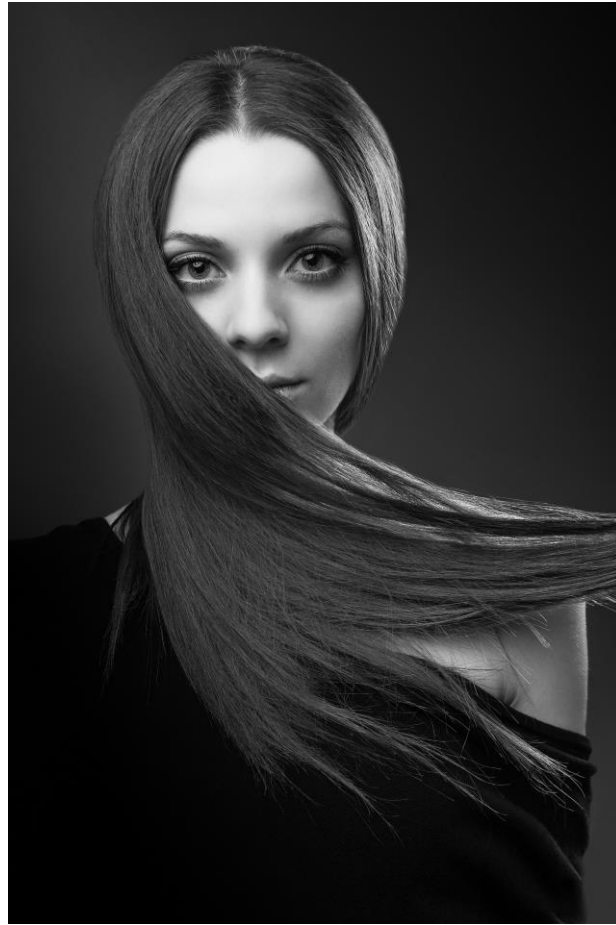


ALINA NANU



Born on 23 August 1990 in Chisinau, Republic of Moldova

Ballet education:

Moldavian State Ballet School, Chisinau
Prague Dance Conservatory

Engagements:

2011-2012 Soloist Prague State Opera

2012-2015 Soloist Czech National Ballet

Since 2015 Principal Dancer Czech National Ballet

Current Repertory:

La fille mal grée (F.Ashton) - Lise
Serenade (G.Balanchine) - Russian girl
La Bayadere (J.Torres) - Nikiya, Gamzatti
Romeo and Juliet (P.Zuska) - Juliet
The Snow Queen (M.Corder) - Snow Queen
Nutcracker, a Christmas Carol (Y.Vamos) - Klara
The little mermaid (J.Kodet) - The little mermaid
Valmont (L.Vaculik) - Marquise de Merteuil
Decadance (O.Naharin)
Vertigo (M.Bigonzetti)
Rain (R.Poklitaru)

Major roles in Don Quixote (J.Slavicky)
Swan Lake (H.Vlácilova)
Theme and Variations (G.Balanchine)
Nutcracker - A Christmas Carol (Y.Vamos)
Stabat Mater A.Dvorak (P.Zuska)
Cinderella (Jean-Christophe Maillot)
Sleeping Beauty (J.Torres)
Giselle (H.Vlácilova), Deja Vu (P.Zuska)
Suite en Blanc (S.Lifar), etc.

Appeared in several Galas and dance events all over the world.

Other:

Czech National Theater's Award 2014/15

Thalie Award nomination for Don Quixote

1st prize at the Ballet Competition in Romania

Web:

<http://m.narodni-divadlo.cz/en/artist/alina-nanu>